

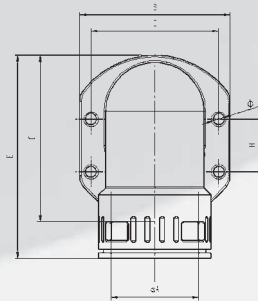
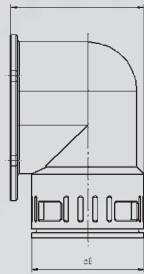
IP 68

-40°C ... +115°C

RQW-F
RQF2-M

Kunststoff-Schnellverschraubung
Winkel 90°, Flanschanschluss
inkl. Flanschdichtung



Plastic connector, quick-type
elbow flange 90°
incl. flange-sealing



Portrait

ROHRflex
Wellenschlauch

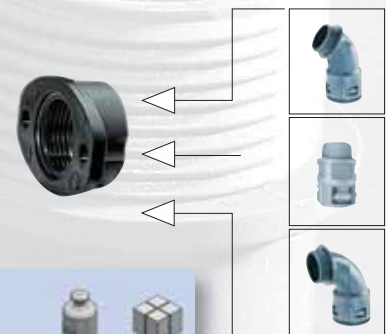
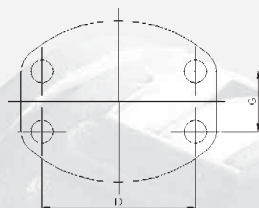
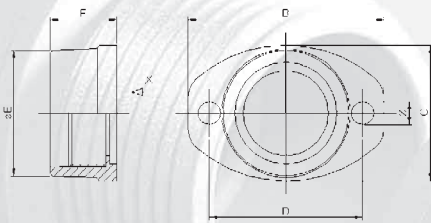
FLEXAquick
Anschluss-
technik




FLEXA No.	FLEXA No.	AD OD												
grau grey	schwarz black	ø	ø A mm	B mm	C mm	D H mm	ø mm	ø G mm	F mm	SW mm	kg/100	St. Pcs.		
RQW-F												[IP 68]		
5020.077.021	5020.077.221	28,5	27,0	65,5	61,0	53	6,6	37	45,0	88,0	4,0	10		
5020.077.029	5020.077.229	34,5	33,0	67,0	77,0	54 36	6,6	44	50,0	110,0	6,0	10		
5020.077.036	5020.077.236	42,5	38,0	85,0	84,5	73 30	6,6	52	64,5	104,0	6,2	10		
5020.077.048	5020.077.248	54,5	50,0	86,0	100,0	73 30	6,6	64	76,0	121,0	7,2	10		



Kunststoff-Flansch passend für alle
metrischen Verschraubungen mit
Außengewinde nach EN 60423

Plastic flange for all metric screw
connectors with outer thread acc.
to EN 60423



FLEXA No.	FLEXA No.	AD OD													
grau grey	schwarz black	ø		B	C	D	G	ø	øE	H	F	kg/100	St. Pcs.		
RQF2-M															
Metr. EN 60423															
5020.071.025	5020.071.225	21,2, 28,5	M 25 x 1,5	46	32	36	5,4	29,5	13,0	15,5	0,59	50			
5020.071.032	5020.071.232	28,5, 34,5	M 32 x 1,5	63	46	52	6,6	37,0	16,5	19,0	1,31	25			
5020.071.040	5020.071.240	34,5, 42,5	M 40 x 1,5	67	55	54 36	6,6	45,0	16,0	18,5	1,66	10			
5020.071.050	5020.071.250	42,5, 54,5	M 50 x 1,5	86	64	73 30	6,6	55,0	17,0	20,0	2,22	10			
5020.071.063	5020.071.263	54,5	M 63 x 1,5	86	70	73 30	6,6	68,0	17,0	20,0	2,24	5			

