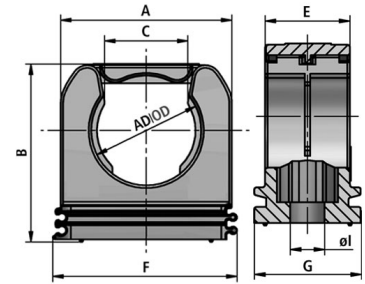


## RQS

### Tubing clamp systems for light, medium and heavy duty applications

One-piece tubing clamp for medium and heavy applications with through hole for fastening by screws, ribbed fixing for strain relief, quick assembly, cover connected with integral hinge, assembly of varying sizes joined feasible, applicable in combination with C-profile bars, HB (UL 94)



**Temperature:** -40°C ... +120°C

**Material:** PA plastics

#### CHARACTERISTICS:

- Properties: ribbed fixing for strain relief
- quick assembly by means of a film hinge
- assembly of varying sized joined in line
- for using in combination with C-profile bar
- free of silicone, cadmium, halogen
- fit for high mechanical stress
- impact-resistant

#### APPLICATIONS:

- Application: for medium and heavy duty applications / machine and plant constructions / insulated electrical installations for application rules machine and plant constructions acc. to DIN EN 60204



FLEXA No.	Colour	OD [mm]	A [mm]	B [mm]	C [mm]	E [mm]	F [mm]	G [mm]	Ø I [mm]	Weight [kg/100]	PU [pcs.]
15030020207	Black	10,0	21,0	23,5	8,5	16,0	23	20	5,5	0,470	50
15030020209	Black	13,0	25,0	25,0	9,2	16,0	27	20	5,5	0,640	50
15030020211	Black	15,8	27,0	27,0	11,2	16,0	29	20	6,5	0,700	50
15030020213	Black	17,8	31,0	31,5	12,7	16,0	32	20	6,5	0,880	50
15030020216	Black	21,2	33,0	34,0	16,1	16,0	35	20	6,5	0,940	50
15030020221	Black	28,5	40,0	40,5	20,5	16,0	42	20	6,5	1,000	25
15030020229	Black	34,5	46,0	46,9	25,7	16,0	48	20	6,5	1,390	25
15030020236	Black	42,5	55,0	55,0	30,0	16,0	57	20	6,5	1,770	25
15030020248	Black	54,5	65,5	69,5	38,0	17,0	69	20	6,5	2,450	10
15030020007	Grey	10,0	21,0	23,5	8,5	16,0	23	20	5,5	0,470	50
15030020009	Grey	13,0	25,0	25,0	9,2	16,0	27	20	5,5	0,640	50
15030020011	Grey	15,8	27,0	27,0	11,2	16,0	29	20	6,5	0,700	50
15030020013	Grey	17,8	31,0	31,5	12,7	16,0	32	20	6,5	0,880	50
15030020016	Grey	21,2	33,0	34,0	16,1	16,0	35	20	6,5	0,940	50
15030020021	Grey	28,5	40,0	40,5	20,5	16,0	42	20	6,5	1,100	25
15030020029	Grey	34,5	46,0	46,9	25,7	16,0	48	20	6,5	1,390	25
15030020036	Grey	42,5	55,0	55,0	30,0	16,0	57	20	6,5	1,770	25
15030020048	Grey	54,5	65,5	69,5	38,0	17,0	69	20	6,5	2,450	10

Recommendations for any areas of applications, products, or product combinations are issued to the best of FLEXA's knowledge and experience. The user is requested to check applicability of FLEXA products to specific applications and purposes prior to the use of the particular products. All documentation, illustrations, and charts published are subject to copyright and must not be copied, changed, used, or modified. Technical drawings, certificates, authorizations, and results by the FLEXA lab will be provided upon request. FLEXA will not be held liable for typographical or other errors and incorrect drawings. Technical modifications are subject to change without prior notice.